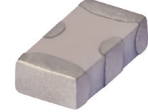


Ceramic Low Pass Filter

50Ω DC⁽¹⁾ to 2400 MHz

LFCN-2400+



Generic photo used for illustration purposes only
CASE STYLE: FV1206

Maximum Ratings

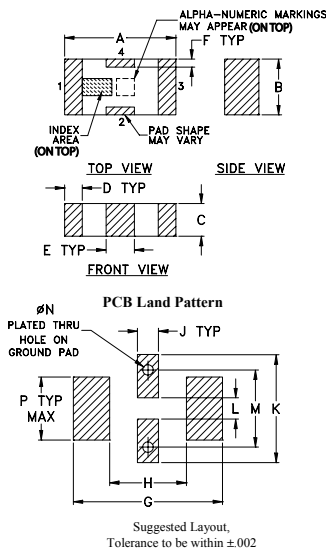
| | |
|-----------------------|-----------------|
| Operating Temperature | -55°C to 100°C |
| Storage Temperature | -55°C to 100°C |
| RF Power Input* | 9W max. at 25°C |

* Passband rating, derate linearly to 4W at 100°C ambient. Permanent damage may occur if any of these limits are exceeded.

Pin Connections

| | |
|--------|-----|
| RF IN | 1 |
| RF OUT | 3 |
| GROUND | 2,4 |

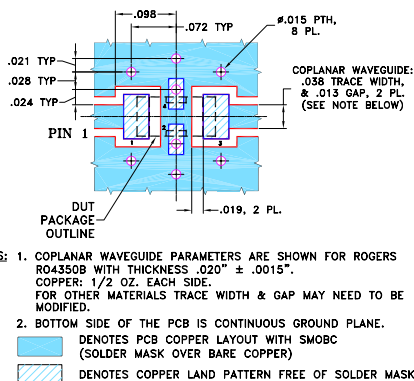
Outline Drawing



Outline Dimensions (inch/mm)

| A | B | C | D | E | F | G | |
|------|------|------|------|------|------|------|-------|
| .126 | .063 | .037 | .020 | .032 | .009 | .169 | |
| 3.20 | 1.60 | 0.94 | 0.51 | 0.81 | 0.23 | 4.29 | |
| H | J | K | L | M | N | P | wt |
| .087 | .024 | .122 | .024 | .087 | .012 | .071 | grams |
| 2.21 | 0.61 | 3.10 | 0.61 | 2.21 | 0.30 | 1.80 | .020 |

Demo Board MCL P/N: TB-270 Suggested PCB Layout (PL-137)



Features

- excellent power handling, 9W
- small size
- 5 sections
- temperature stable
- LTCC construction

Applications

- harmonic rejection
- VHF/UHF transmitters/receivers
- lab use

+RoHS Compliant

The +Suffix identifies RoHS Compliance. See our web site for RoHS Compliance methodologies and qualifications



Available Tape and Reel at no extra cost

| Reel Size | Devices/Reel |
|-----------|-----------------------------------|
| 7" | 20, 50, 100, 200, 500, 1000, 3000 |

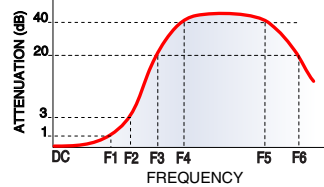
Electrical Specifications^(1,2) at 25°C

| Parameter | F# | Frequency (MHz) | Min. | Typ. | Max. | Unit | |
|-----------|----------------|-----------------|-----------|------|------|------|----|
| Pass Band | Insertion Loss | DC-F1 | DC-2400 | — | — | 1.5 | dB |
| | Freq. Cut-Off | F2 | 2800 | — | 3.0 | — | dB |
| | VSWR | DC-F1 | DC-2400 | — | 1.2 | — | :1 |
| Stop Band | Rejection Loss | F3 | 3600 | 20 | — | — | dB |
| | | F4-F5 | 3700-4000 | — | 30 | — | dB |
| | | F6 | 5000 | — | 20 | — | dB |
| | VSWR | F3-F6 | 3600-5000 | — | 20 | — | :1 |

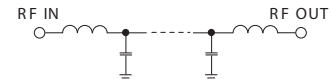
(1) In Applications where DC isolation to ground is required, coupling capacitors are recommended to avoid DC leakage. Alternatively, if DC pass IN-OUT is required, Mini-Circuits "D" suffix version of this model will support DC IN-OUT, and provide >100 MOhm isolation to ground.

(2) Measured on Mini-Circuits Characterization Test Board TB-270.

Typical Frequency Response

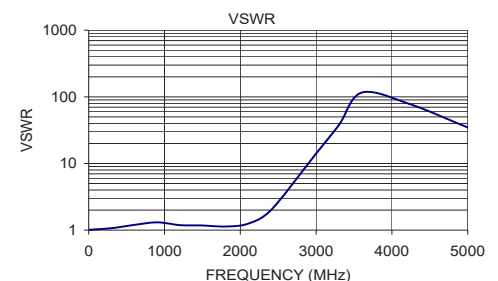
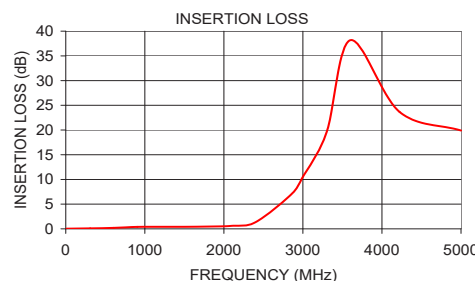


Electrical Schematic



Typical Performance Data at 25°C

| Frequency (MHz) | Insertion Loss (dB) | VSWR (:1) |
|-----------------|---------------------|-----------|
| 10.00 | 0.03 | 1.01 |
| 308.75 | 0.10 | 1.07 |
| 607.50 | 0.20 | 1.20 |
| 906.25 | 0.39 | 1.31 |
| 1205.00 | 0.41 | 1.19 |
| 1503.75 | 0.41 | 1.17 |
| 1802.50 | 0.46 | 1.13 |
| 2101.25 | 0.62 | 1.25 |
| 2400.00 | 1.34 | 1.97 |
| 2850.00 | 6.94 | 8.51 |
| 3000.00 | 10.53 | 14.15 |
| 3300.00 | 19.58 | 37.77 |
| 3600.00 | 38.18 | 115.81 |
| 4222.22 | 23.66 | 78.97 |
| 5000.00 | 19.90 | 34.75 |



Notes

- Performance and quality attributes and conditions not expressly stated in this specification document are intended to be excluded and do not form a part of this specification document.
- Electrical specifications and performance data contained in this specification document are based on Mini-Circuit's applicable established test performance criteria and measurement instructions.
- The parts covered by this specification document are subject to Mini-Circuits standard limited warranty and terms and conditions (collectively, "Standard Terms"); Purchasers of this part are entitled to the rights and benefits contained therein. For a full statement of the Standard Terms and the exclusive rights and remedies thereunder, please visit Mini-Circuits' website at www.minicircuits.com/MCLStore/terms.jsp



Mouser Electronics

Authorized Distributor

Click to View Pricing, Inventory, Delivery & Lifecycle Information:

[Mini-Circuits:](#)

[LFCN-2400+](#)